



# Emigration to America



The Antwerp city archives wishes to assist researchers and users of the reading room at the city archives as much as possible by means of brochures published in relation to particular archives or particular topics for which a great deal of interest exists.

Since the publication of the first Emigration to America brochure in 1995 the need has been felt for a review and expansion of this brochure. Mr Robert Vervoort, Director of the non-profit association Red Star Line and a visitor to the Antwerp city archives reading room, was prepared to supplement the text of the brochure with new and improved data. He therefore took up contact with the divisions concerned.

He also made photographs available from his rich collection in order to illustrate the brochure. A number of these photographs have never been published before.

We are therefore very grateful to him and thankful for his contribution.

Inge Schoups  
City Archivist of Antwerp

RED STAR LINE



Red Star Line

## EMIGRATION TO AMERICA

### *Departure from Antwerp*

Though one of the most important transit ports in Europe, even Antwerp has had its ups and downs when it comes to emigrants leaving the port for destinations in the United States of America, Canada and South America. The phenomenon of emigration as a whole can be viewed as it relates to two significant groups. The first of these is represented by pioneers who left in sailing ships from as early as the 17th century onward. They were sometimes at sea for months, at the mercy of disease and storms. During the 18th century and at the beginning of the 19th century, the departure of emigrants from Antwerp gradually subsided due to its bad name as a departure port.

The second and most important group of emigrants left on board steamers. The crossing had been reduced to a few weeks and by this time drastic changes had been made in the areas of medical provisions and safety. This group was well represented at the end of the 19th century and the beginning of the 20th.

The setting up of the Red Star Line in 1872 and the new ships, a combination of sail and steam, was the reason that emigrants once again began to choose Antwerp as a port of departure. From 1843 to 1905, a total of 1,086,153 emigrants drawn from the whole of Europe departed from the port of Antwerp.

### *Tracing of emigrant or immigrant ancestors*

Tracing ancestors is by no means an easy task. Searches are occasionally successful though with the help of documents kept in various archives both at home and abroad. One important fact needs to be taken into account: many archives have gone up in flames over the course of the years or have been destroyed as a result of war, particularly in Europe.

Once a search has begun however, it is very important to collect as many particulars as possible regarding the person to be traced. Essentially important is the attempt to find the date of departure of the person from Antwerp, the name of the ship and the destination.

To help these genealogical searchers, here is an overview of available sources at home and abroad.

### *Red Star Line*

The Red Star Line, set up in 1872 by enterprising businessmen from Philadelphia and Antwerp, was one of the most important shipping companies ever to transport emigrants from Antwerp to the United States and Canada. In 1935, when all American shipping companies with interests abroad and ships registered under foreign flags were recalled to America as part of President Roosevelt's New Deal and then forced to sell their ships registered under foreign flags, the shipping company was taken over by the Hamburg shipping magnate Arnold Bernstein. He also acquired the Red Star Line ships "Westernland" and "Pennland". In 1939 both the shipping company and the ships were sold to the Dutch shipping company "Holland America Line" (HAL), Rotterdam. From that date onwards HAL operated a service from Antwerp to North America, the Red Star Line service. The HAL passenger lists from 1939 onwards can be consulted on microfilm at the municipal archives in Rotterdam. Nothing has survived of the Red Star Line archives.

*General view*



## **Addresses**

### ***1. BELGIAN ARCHIVES***

#### **Antwerp City Archives (Stadsarchief Antwerpen)**

Venusstraat 11, B - 2000 Antwerp,

tel.: (00.32)(03)206 94 11, fax: (00.32)(03)206 94 10

Mondays to Fridays from 08:30 to 16:30

#### ***Residents of Belgium***

It is important to know the date on which the person was written out of the population register in the municipality of departure. Searches in the population registers for the years 1800-1880 can be undertaken on micro-film. See inventory nr. 65.

#### ***Hotels and boarding houses***

Most immigrants stayed in boarding houses in Antwerp, the more well-off stayed in hotels.

#### **Hotel registers**

A number of hotel registers are preserved in the city archives: section Modern Archive (MA). It is very difficult however to trace persons in these registers, since they very seldom have alphabetical indexes. They are exclusively chronological.

- 1801-1810:           MA 2641/1-6
  - Chronological registers from a variety of hotels
  - Names of hotel guests, no place of origin or destination indicated.
  
- 1801-1813:           MA 2645/1-8
  - Chronological registers from eight different hotels
  - Names of hotel guests, occupation, date of birth and place of residence, passport place of issue and destination sometimes noted.

- 1858-1878, 1881-1886, 1897-1898: MA 2669/1-26 (variety of hotels)
  - Chronological registers from 1858 to 4/6/1874
  - Alphabetical registers from 3/5/1874 to 1/7/1878
  - Chronological registers from 1881 to 1898
  - First names and surnames of hotel guests, occupation, age, place of birth, place of residence, former place of residence, destination (only noted sporadically from 1877 onwards)

### Boarding houses

- 1811-1821: MA 2672
  - Chronological lodgings register from 1st district
  - First names and surnames of guests, occupation, place of birth, place of residence, passport place of issue, destination, alphabetical register at rear.
  
- 1877-1885: MA 2638/1-4
  - Chronological registers per boarding house
  - First names and surnames of guests, occupation, age, place of origin, no destination given.
  
- 1877-1882 MA 2638/1  
 Appelstraat 19, Burchtplein, Dambruggestraat 34, Pieter Potstraat, Sint-Walburgisplein, Steen 4, Vestingstraat 5 and 7, Zakstraat 7, 9, 13, 14 and 16, Zand 22, Zilversmidstraat 1, 11, 16, 18 and 22, miscellaneous
  
- 1879-1882 MA 2638/2  
 Dambruggestraat 34, De Keyserlei 26, Pieter Potstraat, Sint-Walburgisplein, Steen, Zakstraat 13 and 16, Zand 4, Zilversmidstraat 1 and 16
  
- 1880-1882 MA 2638/3 (8<sup>ste</sup> district)  
 Breydelstraat 16, Dambruggestraat 34, De Keyserlei 26, Handelslei 177, Kuipersstraat 13, Nassastraat 2, Pieter Potstraat, Sint-Janskaai 14, Stationstraat 17, Statielei 35 and 38, Stoelstraat 1, Zakstraat 13 and 16, Zilversmidstraat 1, 2, 16, 17, 21

- 1883-1885            MA 2638/4  
Breydelstraat 16, Dambruggestraat 31 and 34,  
Kuipersstraat 13, Lange Pandstraat 4, Oever 9,  
Statiestraat 38, Van Arteveldestraat 69, Zakstraat 13,  
Zilversmidstraat 16 and 17, Zirkstraat 11
- 1925-1979            BA 688 (Jozef Sels boarding house, Lange Sint-Anna-  
straat 1)
  - Chronological register of the boarding house from 1925 to 1946,  
thereafter, rented house to 1979.
  - First names and surnames of guests, occupation, year of birth and  
place of residence, date of departure and sometimes destination.

### *Foreigners*

Foreigners are frequently difficult to trace. Only when they have been resident in Antwerp for an extended period of time are they registered. In these cases they can be found in the foreigner files. These files are made public 100 years after the closing of the relevant dossier. The most recent files can only be consulted by the person concerned and by permission of the archivist and the Board of Burgomaster and Aldermen after completing the "Application for examination of an administrative document" form.

### *Alphabetical registers of Foreigner Files: 1840 - 1915*

The foreigner file can only be found via the alphabetical register. You will find the file number in this register.

- 1840 - 1874            MA 62 521 (1 volume)  
The register is in alphabetical surname order and also  
indicates the first name and the file number.
- 1875 - 1885            MA 62 522 (1 volume)  
The register is in alphabetical surname order and also  
indicates the first name and the file number.
- 1886 - 1900            MA 23 449 - 23 454 (6 volumes)  
The registers are in alphabetical surname order and also  
indicate the first name, file number, place and year of  
birth.

MA 23 449 A - C  
MA 23 450 D - G  
MA 23 451 H - L  
MA 23 452 M - P  
MA 23 453 Q - T  
MA 23 454 U - Z

1901 - 1915

MA 23 455 - 23 464 (10 volumes)

The registers are in alphabetical surname order and also indicate the first name, file number, place and year of birth.

MA 23 455 Aa - Browaznik  
MA 23 456 Browiez - Dzolaschisky  
MA 23 457 Eagles - Grothe  
MA 23 458 Grothum - Juzbasic  
MA 23 459 Kaadtman - Litwak  
MA 23 460 Litwak - Ozwick  
MA 23 461 Paalasma - Salm  
MA 23 462 Salm - Szymel  
MA 23 463 Taalman - Veerman  
MA 23 464 Veerman - Zywan

*Numeric registers of foreigner registers: 1904 - 1915*

1901 - 1914 MA 23 420 (4 sections)  
1901 - 1904 dossiers 100 569 - 110800  
1904 - 1907 dossiers 110 801 - 123800  
1907 - 1910 dossiers 123 801 - 134700  
1910 - 1914 dossiers 134 701 - 156000

*Foreigner register of the Oorderen municipality*

1924 - 1927 MA 58 086 (1 volume)  
Register with entries according to number with an alphabetical index to the rear of the register.

*Foreigner register of the Merksem municipality*

1933 - 1942 MA 58 087 (1 band)  
Register with entries according to number

### *Foreigner files*

If the file number is known the archive number can be traced.

1840 - 1910	MA 44 284 - 44 787	numbers 1 - 134 900
1910 - 1928	MA 49 905 - 50 316	numbers 134 901 - 200 000
1928 - 1964	MA 55 893 - 57 928	numbers 200 001 - 350 000

### **Provincial Archives Antwerp (Provinciaal Archief Antwerpen)**

Koningin Elisabethlei 22, B - 2018 Antwerp,

tel.: (00.32)(03)240 50 11

Mondays to Fridays: 09:30 to 16:00

Here are to be found archives from 1861 to 1906 with complaints about emigrants, sub agents of the shipping companies, newspaper articles, matters concerning emigration, regulations, statistics, statements drawn up at ship departures.

The inventory is included in a publication by the VVF emigration work group under the direction of Jan Vanderhaeghe, *Emigranten naar Amerika*, Vlaamse Vereniging voor Familiekunde, Afdeling Antwerpen, 1992 [Emigrants to America, Flemish Association for Family Research, Antwerp Division, 1992] (BIB.8717).

### **National Archives Antwerp (Rijksarchief Antwerpen)**

Verstraeteplaats 5, B - 2018 Antwerp,

tel.: (00.32)(03)236 73 00, fax: (00.32)(03)236 73 00

Tuesdays to Fridays: 08:30 to 12 noon and 13:00 to 16:30

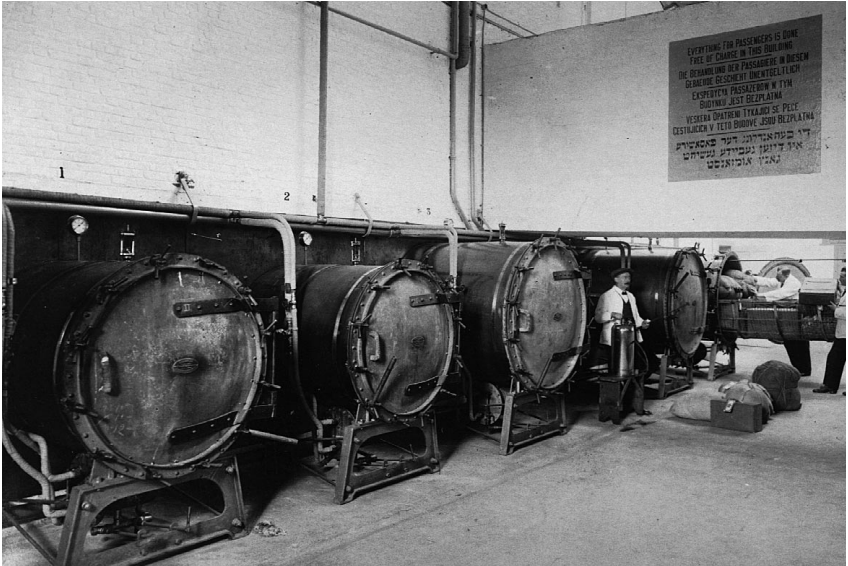
Saturdays: 08:30 to 12 noon and 13:00 to 16:00 (only for documents requested in advance)

This archive division preserves only a passenger register from 1855 showing all persons who departed from Antwerp, Belgians and foreigners. All other registers were destroyed during the First World War (1914-1918). This register has been indexed by the Mormon Church Community and contains the following data: name, age, place of birth, passport place of issue and name of the ship.

This index is published in: Charles M. Hall, *The Antwerp Emigration Index (1855)*, Salt Lake City, Heritage International, 1979.



*The baggage room*



*Desinfection room where the baggage is loaded into the machines*

## **National Archives Beveren (Rijksarchief Beveren)**

Kruibekesteenweg 39, B - 9120 Beveren, tel.: (00.32)(03)775 38 39

Tuesdays to Fridays: 08:30 to 12 noon and 13:00 to 16:30

Saturday: 08:30 to 12 noon and 13:00 to 16:00 (only for access to micro-films, no documents.)

Here are kept the dossiers of the Ministry of Transport and Infrastructure, more particularly those relating to the Chief Inspectorate of Waterways, Antwerp. An inventory list is available.

These dossiers deal with a wide range of matters from 1920 to 1940. There are a number of passenger lists from the same period, however these are not complete. These lists contain surnames, first names, age, occupation, place of residence and destination.

## **National Archives of Belgium, Brussels (Algemeen Rijksarchief Brussel)**

Ruisbroekstraat 2-6, B - 1000 Brussels,

tel.: (00.32)(02)513 76 80 fax: (00.32)(02)513 76 81

Mondays to Fridays, 08:30 to 12:30 and 13:00 to 16:30

Saturday: 08:30 to 12 noon and 13:00 to 16:00 (closed on Saturdays in July and August.)

Important here are the archives of the Ministry of Justice, Public Safety Administration, Police Foreigners Division.

These dossiers, the 'General dossiers nos. 251-276, 283-289', cover the period from 1830-1914 and contain details of emigrants who were registered by the Belgian government. Archive documents relating to emigrants who were refused entry and returned to Antwerp, who subsequently stayed here without means of sustenance and were repatriated, are included.

Inventory compiler: Solange Vervaeck, *Inventaire des archives du Ministère de la Justice, Administration de la Sûreté Publique, (Police des Etrangers): dossiers généraux (Régime Français-1914)*, Bruxelles: Archives Générales du Royaume, 1968.

Also to be found in the Seafarers Administration are matters concerned with emigrants. The inventory of this archive is available at the reading room at Brussels and in the National archives at Antwerp.

Inventory compiler: C. Vleschouwers, *Inventaris van het archief van het Bestuur van het Zeewezen, 1830 - 1976*, Brussels: Algemeen Rijksarchief, 1979.

## **Archives of the Ministry of Foreign Affairs, Brussels (Archief van het Ministerie van Buitenlandse Zaken, Brussel)**

Karmelietenstraat 15, B - 1000 Brussels, tel.: (02)501 82 11

Mondays to Fridays: 09:00 to 16:00 (document requests only permitted before noon)

The archives preserve lists drawn up by the emigration officer Eugène Venesoen, head of the emigration service at Antwerp from 1892. These lists contain details of third class passenger emigrants who departed directly from Antwerp to North and South America and Canada. Most emigrants to Canada however usually travelled via an American port.

In 1893, America imposed immigration restrictions on the number of emigrants it would accept, however emigrants who could afford to buy a second-class ticket were able to avoid the effects of the new restrictions. They escaped in this way from being questioned by the emigration officer and therefore no longer appeared on the lists.

The following documents are available for inspection:

- Monthly reports which note details of Belgian emigrants: the ship and the destination: surnames and first names, age, place of origin, occupation, place of destination, languages spoken by the emigrant, the amount of cash in the possession of the emigrant.
- Monthly reports with an overview of the total emigrants departed, subdivided into ships, flags under which ships sailed, date of departure, name of the captain and name of the ship.
- 1900-1903 dossier 295/I (monthly reports of Belgian emigrants)
- 1904-1906 dossier 295/II (ditto)
- 1907-1910 dossier 295/III (ditto)
- 1909-1914 dossier 295/IV (List of Belgian emigrants who embarked in Antwerp).
- Statistics of emigrants from Belgium and abroad (1900-1914).

The details for the period 1/1/1901 to 31/7/1902 (North America) and 11/1/1901 to 31/7/1902 and 1/1/1903 to 31/3/1903 (South America) have already been incorporated in the following publications:

J. Vanderhaeghe e.a., *Emigranten naar Amerika*. Antwerpen, V.V.F., 1992 (BIB.8717).

G. Bauwens e.a. , *Emigranten naar Amerika: II periode 1903-1904*, 1996.

R. Deruyter, *Emigranten naar Amerika: III periode 1905*, 1998.

## ***2. ARCHIVES IN THE NETHERLANDS***

### **National Archives, The Hague (Algemeen Rijksarchief Den Haag)**

Prins Willem Alexanderhof 20

P.O. Box 90520, NL-2509 LM Den Haag,

tel.: (00.31)(070)331 54 00 fax: (00.31)(070)331 54 99

On 21 December 1847, the Dutch Ministry of Internal Affairs implemented a decree in relation to 'A statement of Emigrants to North America and other overseas regions'. From this date onwards municipal administrations were obliged to draw up annual lists of persons who emigrated abroad. A number of the municipalities even reconstructed lists relating to previous years, going back to 1835. The National Archives preserves these fairly complete annual lists from **1848 to 1877**.

In 1877 the Statistics Bureau (now CBS) was made responsible for these reports. It was here that the municipal lists were compiled and published, including publication in the Dutch State Gazette. The original lists were unfortunately destroyed.

The National Archives also possesses lists dating from before 1848 and after 1880 which were found in provincial and municipality archives.

### **Rotterdam Municipal Archives (Gemeentearchief Rotterdam)**

Hofdijk 651, NL - 3032 CG Rotterdam

P.O. Box 71, NL - 3000 AB Rotterdam

tel.: (00.31)(010)24 34 576 fax: (00.31)(010)24 34 666

Mondays to Fridays 08:45 to 16:45, Wednesdays 18:30 to 21:30

These archives preserve the archives of the 'Holland America Line' (HAL). They include all matters connected with the takeover of the Red Star Line by the German shipping magnate Arnold Steinberg in 1939. Details relate however only to the ships 'Westernland' and 'Pennland' which had been acquired and for which no passenger lists, but only ships journals for the years 1939-1940 have been preserved. To be found in these journals however are the name of the captain, the purpose of the voyage and the date of arrival.

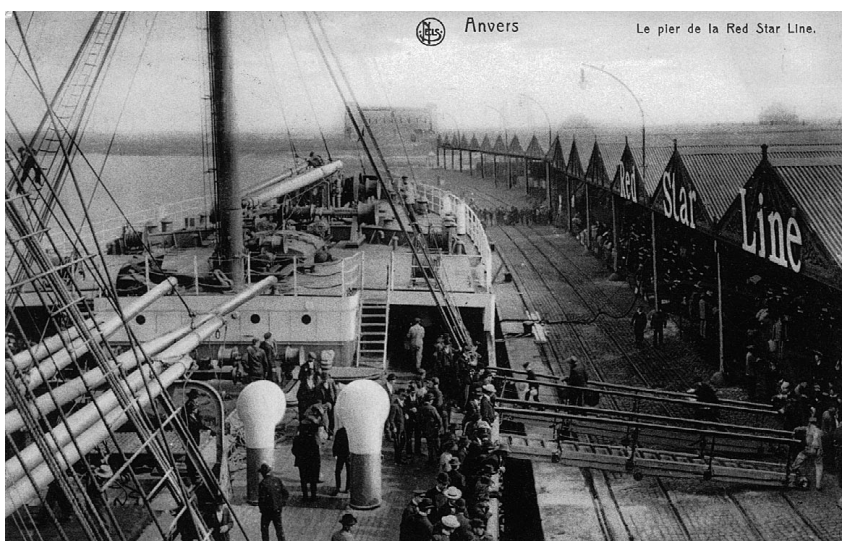
Passenger lists of the Holland America Line (from 1900) are available on microfilm in these archives however containing names of passengers, initials and the port at which they embarked. In some cases the place of

departure (Rotterdam or Antwerp) is noted. In none of these records is a destination listed. Unfortunately these passenger lists are not properly indexed alphabetically, but recorded in a random fashion based on the first letter of the surname. Given that the series is built up chronologically, it is necessary to know an approximate departure date. These archives contain no further details of the Red Star Line.

### ***3. ARCHIVES IN THE UNITED STATES OF AMERICA***

For persons who wish to undertake archive searches in the United States, it is advisable to contact the archive service in advance in order to ascertain the research possibilities and the opening hours.

The most important sources are the passenger lists from 1820 onwards, albeit that these lists have not been preserved in all cases. Occasional lists relating to earlier periods are preserved in a number of archive services. The best overview of these is the publication by P. William Filby, *A guide to published arrival records of about 500.000 passengers who came to the United States and Canada in the 17<sup>th</sup>, 18<sup>th</sup> and 19<sup>th</sup> centuries*, Detroit, Gale Research Company, 1981.



*Quay, departure point for the ships of the Red Star Line*



*View on board a steamship of the Red Star Line*

Another source are the files of applications for American nationality: the Naturalisation Files. In the 19<sup>th</sup> century however these dossiers provided little information regarding arrival details. Persons had to live at least five years in the United States before they were eligible to submit an application. These archives differ from states to state. The various regional archive services should be contacted for further information.

### **National Archives and Records Administration**

National Archives Building, 7th & Pennsylvania Avenue NW, USA - Washington DC 20408,

tel.: (00.1)(202)501 54 00, fax: (00.1)(202)501 57 59

Internet: [www.nara.gov](http://www.nara.gov)

The American National Archives and Records Administration has the passenger lists from 1820 onwards of emigrants who arrived in the United States at each of the ports of arrival, with the following details: name, age, country of origin, often the name of the ship and the date of arrival. The passenger lists are documents which were drawn up under oath by the ship captains. According to the law, they had to be submitted to customs offi-

cers in any foreign port. (Act of Congress 2 March 1819). Large differences may exist between the various ports regarding the details noted in these passenger lists. These details were in general more extensively recorded after 1893. In principle, most passenger lists can be consulted on microfilm. For most years there are also indexes provided.

It is very difficult to trace names without an index.

A full overview of the existing microfilms has been published, but this can also be found on the National Archives Internet pages.

Copies of the originals or the microfilm are made on application and subject to a fee. Applications should be made to: Publications Distribution, National Archives (see address above).

The most important of the arrival ports are shown below, together with the available passenger lists:

Baltimore 1820-1948

Boston 1820-1943

New York 1820-1957

Philadelphia 1800-1945

A full overview of all ports and preserved documents can be found in the following book:

Michael Tepper, *American Passenger Arrival Records*, Genealogical Publishing Co., 1996 (ISBN 0-8063-1380-3).

Another important book for researchers is the work of Alan Morton, with an overview of all ships which arrived in the ports of New York, Boston and Baltimore from 1890 to 1930.

Allan Morton, *Directory of European Passenger Steamship Arrivals*, Genealogical Publishing Co. Inc., 1993. (ISBN 0-8063-0830-3)

The National Archives in Washington preserve the naturalisation files of the District of Columbia, for the period 1802 - 1926.

## **New York**

From 1892 to 1954 more than 12 million people passed through the immigration services at Ellis Island, New York; more than 70% of all emigrants arrived in the United States in New York.

### **Ellis Island Monument**

National Park Service, Ellis Island National Monument, NY 10004 New York.

The museum is set up in the restored buildings on the island where from 1892 to 1954, all emigrants who had made the voyage 3<sup>rd</sup> class arrived.

The museum reopened its doors in 1990 after far reaching restoration. This was the largest restoration project in American history. Dispersed over the different floors of the exhibition, a clear presentation is given of all the stages an immigrant had to go through before he was given a travel visa. There were plans to set up a computer database with the names of 17 million emigrants. The projected completion date for this project was 1992; but nothing of this has been seen so far.

There is however a “Wall of Honor”, a wall containing the names of 420,000 immigrants. These names can also be retrieved via a computer set up in the entrance hall. For a fee, the names of ancestors who came to America as emigrants can be included in this list. There is also a shop with a large offering of books and video films by and about immigrants.

The island lies in the bay from which the Statue of Liberty can be reached by ferry boat from New York or from Battery Park. This is a connection which goes to both the Statue of Liberty and Ellis Island. For persons staying in Manhattan, the Battery Park service is the best.

The Ellis Island Foundation, located at 52 Vanderbilt Avenue NY 10017-3898 New York (tel.: (00.1)(212)883 1986), is a foundation that primarily concerns itself with the management of Ellis Island as a monument. It strives to collect funds for sections of the island that still need to be renovated and it is responsible for staging temporary exhibitions.

Immigration Station, Ellis Island, N. Y. City.



*View of the Immigration office at Ellis Island, New York (USA)*

## **National Archives Regional Center in New York**

National Archives - Northeast Region, 201 Varick Street,  
New York, NY 10014

Tel.: (00 -1) 212-337.1300 fax: (00 -1) 212.337.1306

Since 1969, there have also been a number of National Archives Regional Services. As well as archives of local importance, these also preserve large collections of associated microfilms and indexes.

Given the importance of the port of New York as the point of arrival for millions of immigrants, all the films of the passenger lists and the existing indexes are preserved here. This involves nearly 9,000 microfilms. These can be examined in a reading room.

The naturalisation files here only record in a systematic manner, details of arrivals in the United States from 1906 onwards.

## **New York Municipal Archives**

31 Chambers Street - room 103, New York, NY 10007

The registers of births, marriages and deaths for the various constituent municipalities of New York: Manhattan mainly from 1847, Brooklyn

mainly from 1866, The Bronx from 1898 (for earlier years searches must be made under Manhattan), Queens from 1898 and Richmond also from 1898.

They also preserve census lists, such as those of the New York City census of 1890.

## **Genealogical centres and associations**

### **Belgium**

*Flemish Association for Family Research*  
(Vlaamse Vereniging voor Familiekunde)

Van Heybeeckstraat 3, B - 2170 Merksem,

tel.: (03)646 99 88 fax: (03)644 46 20

Reading room open Wednesdays 12 noon to 19:00, Thursdays 09:00 to 18:00,

Saturdays 13:00 to 18:00

Closed on Saturdays in July and August.

Magazine: *Vlaamse Stam*

The emigration working group has already elaborated a number of annual series of the Venesoen reports, (Ministry of Foreign Affairs) and published these in book form:

J. Vanderhaeghe e.a., *Emigranten naar Amerika: I periode 1901-1902*, 1992.

G. Bauwens e.a., *Emigranten naar Amerika: II periode 1903-1904*, 1996.

R. Deruyter, *Emigranten naar Amerika: III periode 1905*, 1998.

Copies of the Detroit Gazette are also available, in which many names appear.

For other Belgian genealogical associations, researchers should consult for instance the publication available in the city archives reference library, archives section: M. Van de Cruys, *Archieven*, Antwerp: VVF, 1993

*Mormon Church (Church of Latter-Day Saints). Family history centre*

Bergen-op-Zoomlaan 20, 2170 Antwerp, tel.: (00.32)(03)646 08 59

The reading room is open by arrangement, contact persons for the periods required:

Monday	13:00 to 17:00	Mr P. Verhaegen	(03)647 11 35
Tuesday	13:00 to 17:00	Mr L. Verheyen	(03)645 43 17
Wednesday	19:00 to 22:00	Mrs. De Baene	(03)455 52 05
Thursday	19:00 to 22:00	Mrs. Stappels	(03)324 25 03
Saturday	09:00 to 12 noon	Mrs Heylen	(03)248 95 49

Outside of these hours Dirk Wouters tel.: (03)644 29 75.

These family history centres have very large amounts of data available on CD-ROM and microfilm. The microfilms, which cover the whole world, can be leased for research purposes for a period of four months at the price of BEF 210 per film.

## **The Netherlands**

*Netherlands Genealogical Association.*

P.O. Box 976, NL - 1000 AZ Amsterdam

Library: Promerskazerne, Adr. Dortsmanplein 3a, NL - 1411 RC Naarden

Thursdays 20:00 to 22:00 Saturdays 11:00 to 16:00

Monthly magazine: *Gens Nostra*

For other Dutch genealogical associations, researchers should consult for instance the publication available in the city archives reference library, archives section: M. Van de Cruys, *Archieven*, Antwerp, VVF, 1993

## **United States of America**

There are a number of bodies from which catalogues and microfilms can be purchased:

American Genealogic Lending Library

Historic Resources, Inc., PO Box 254

Bountiful, Utah 84011-0254

Scholarly Resources, Inc.

104 Graanhill Avenue

Wilmington, Del. 19805-1897

The Belgian Researchers Inc. (founded in 1976)  
Belgian American Heritage Association  
62073 Fruitdale Lane  
La Grande, Oregon 97850-5312  
(magazine: Belgian Laces)

Temple University (Dr. Ira A. Glazier)  
Balch Institute Center for Immigration Research  
18 South 7th Street  
Philadelphia, Pennsylvania 19106

University of Wisconsin, Green Bay (Dr. Tom Reitz)  
Research Center  
2420 Nicolet Drive  
Green Bay, Wisconsin 54301-7001

Genealogical Society of Flemish Americans  
18740 - 13 Mile Rd  
Roseville, Michigan 48066

The Genealogical Society of the Church of Jesus  
80, North Maine Street  
Salt Lake City, Utah

American Jewish Archives (Rabbi Malcolm Stern)  
3101 Clifton Ave.  
Cincinnati, Ohio 45220.

## Literature

J. Vanderhaeghe e.a., *Emigranten naar Amerika: I periode 1901-1902*, 1992, VVF, Merksem (BIB.8717).

G. Bauwens e.a. , *Emigranten naar Amerika: II periode 1903-1904*, 1996, VVF, Merksem.

R. Deruyter, *Emigranten naar Amerika: III periode 1905*, 1998, VVF, Merksem.

Angus Baxter, *In search of your European roots*, z.d.

John Ph. Coletta, *They came in ships. A guide to finding your immigrant ancestor's arrival record*, 1993.

P. William Filby, *A guide to published arrival records of about 500.000 passengers who came to the United States and Canada in the 17<sup>th</sup>, 18<sup>th</sup> and 19<sup>th</sup> centuries*, Detroit, Gale Research Company, 1981.

P.William Filby, *Passenger and immigration lists of arrivals in the United States and Canada*, Detroit, Gale Research company, 1988.

Charles M. Hall, *The Antwerp Emigration Index (1855)*, Salt Lake City, Heritage International, 1979.

Arthur Kurzweil, *From generation to generation. How to find your Jewish genealogy and personal history*, z.d.

Allan Morton, *Directory of European Passenger Steamship Arrivals*, Genealogical Publishing Co. Inc., 1993. (ISBN 0-8063-0830-3).

Rabbi Malcolm Stern, *First American Jewish Families*, z.d.

Michael Tepper, *American Passenger Arrival Records*, Genealogical Publishing Co., 1996. (ISBN 0-8063-1380-3).

Red Star Line  
Addresses .....7  
    1. Belgian archives .....7  
    2. Archives in the Netherlands.....15  
    3. Archives in the United States of America .....16  
Genealogical centres and associations .....21

## **Colofon**

Set up, printing and binding work: City of Antwerp Graphics Centre

Official depot number: D/1999/0306/54

Responsible for publication: Inge Schoups, Venusstraat 11, 2000 Antwerp

August 1999